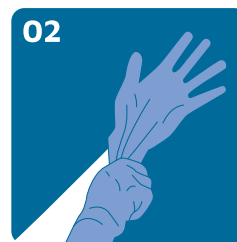


Instruções de uso

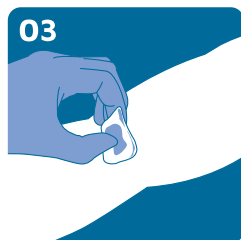
**ivKit<sup>®</sup>**  
**Acesso periférico**



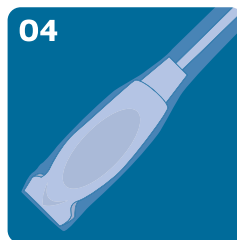
Higienize as mãos



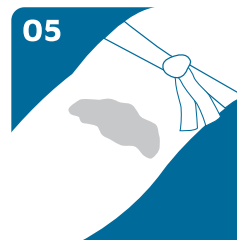
Coloque as luvas estéreis



Faça a antissepsia da pele e descarte as luvas



Calce o segundo par de luvas e prepare o transdutor



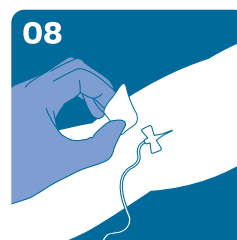
Aplique gel sobre a pele e prenda o garrote



Identifique o vaso



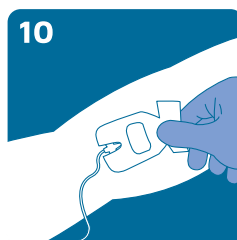
Realize a punção, observando o retorno venoso



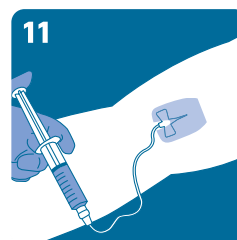
Aplique o protetor cutâneo



Consulte no verso a aplicação adequada do seu curativo



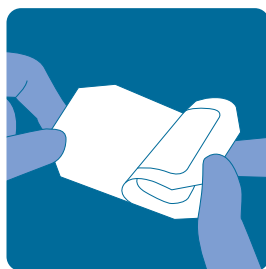
Aplique a estabilização / cobertura



Realize o flushing

## OncoDerm® sem Fenestra

**IMPORTANTE:** Aplique o protetor cutâneo SkinPrep e aguarde pela secagem completa.



Remova a camada protetora



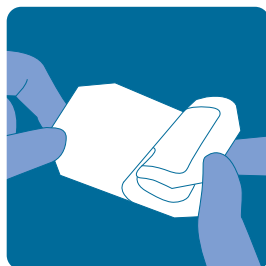
Posicione e aplique o curativo



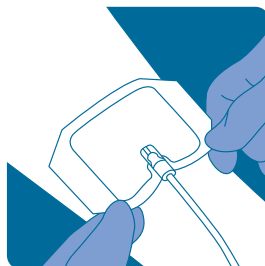
Remova a borda do curativo

## OncoDerm® Fenestrado

**IMPORTANTE:** Aplique o protetor cutâneo SkinPrep e aguarde pela secagem completa.



Remova a camada protetora



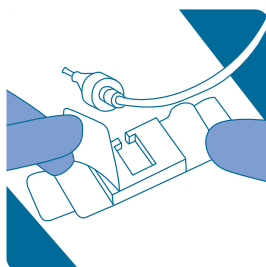
Posicione e aplique o curativo



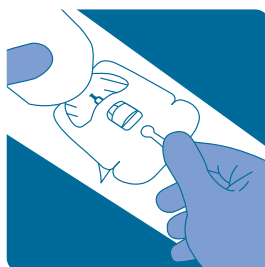
Remova a borda do curativo

## Securis™

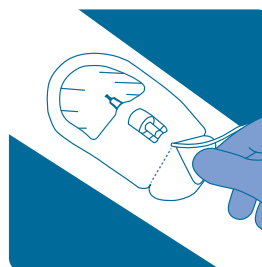
**IMPORTANTE:** Aplique o protetor cutâneo SkinPrep e aguarde pela secagem completa.



Aplique a base



Aplique o curativo



Cruze as abas sob o conector luer